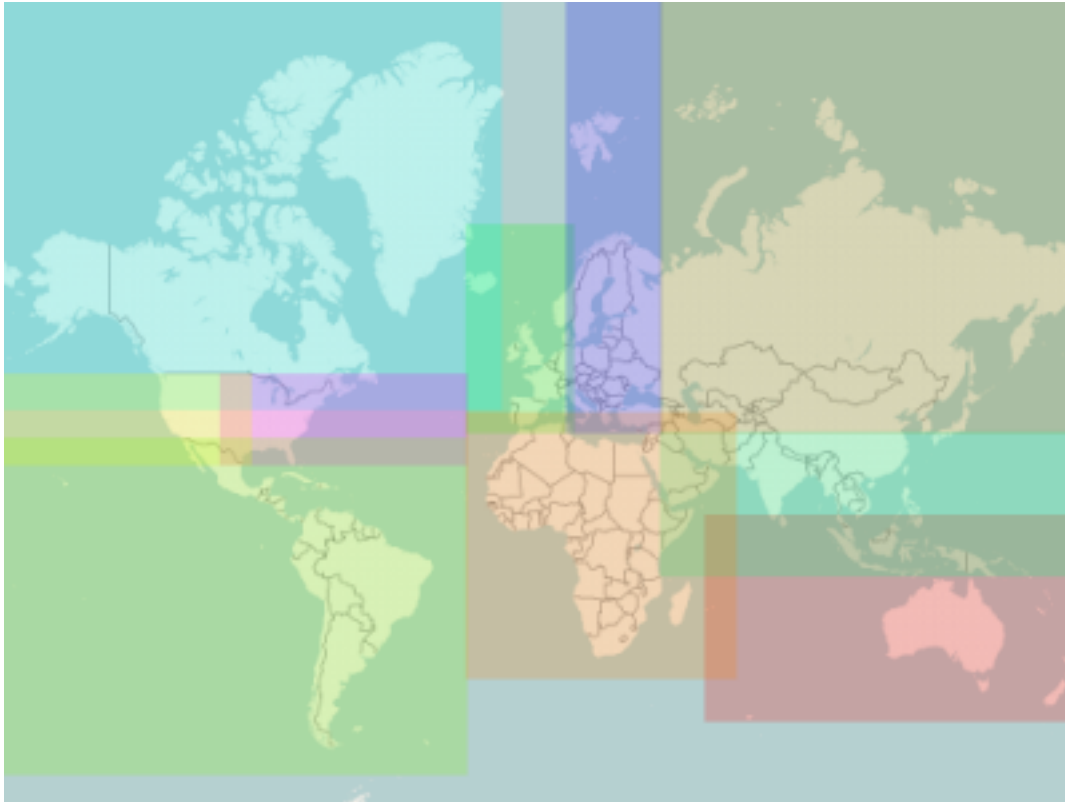


OpenStreetMap Garmin Maps Generator

User's guide



OpenStreetMap Garmin Maps Generator: User's guide

Copyright © 2017 RNDr. Frantisek Mantlik

Table of Contents

| | |
|---|----|
| 1. Getting started | 1 |
| 1.1. Introduction | 1 |
| 1.2. Quick start | 1 |
| 2. Reference | 2 |
| 2.1. Main window controls | 2 |
| 2.1.1. Toolbar | 2 |
| 2.1.2. Progress bars | 3 |
| 2.1.3. Output window | 3 |
| 2.2. Program settings | 3 |
| 2.2.1. Download sources | 4 |
| 2.2.2. Processing parameters | 5 |
| 2.2.3. Regions | 8 |
| 2.2.4. Other sections of the Options dialog | 8 |
| 3. Using your map files | 10 |
| 4. Startup options | 12 |
| 4.1. Assign more memory to the program | 12 |
| 5. Command-line processing | 14 |
| 6. Installation, Un-installation, Updating, Upgrading | 15 |
| 6.1. System requirements | 15 |
| 6.2. Installation | 15 |
| 6.3. Un-installation | 15 |
| 6.4. Upgrading | 15 |
| 6.5. Unstable (development) version | 16 |
| A. Frequently asked questions | 17 |
| B. Contours generation | 19 |
| C. License | 21 |
| C.1. GNU General Public License | 21 |
| C.2. Third party libraries | 26 |

Chapter 1. Getting started

1.1. Introduction

Osm2garmin combines OpenStreetMap (OSM) geographic data with contours from NASA's SRTM data and generates maps for Garmin GPS receivers.

It is a total solution, downloading the required data, processing the data through 3 external tools (Mkgmap, Splitter and Osmosis - included in the distribution) and creating map files that can be used by Garmin GPSs or loaded into MapSource/BaseCamp/QLandkarte.

The program is a Netbeans Rich Client application running within Sun Java virtual machine.



Map creation sequence:

- OSM Planet and required SRTM data are downloaded.
- Contours are generated from SRTM data.
- OSM data are converted to Garmin format.
- gmapsupp.img and supporting files are created.

For subsequent updates of processed regions only OSM Planet updates are downloaded and these are joined to existing contour data to generate updated map files.

1.2. Quick start

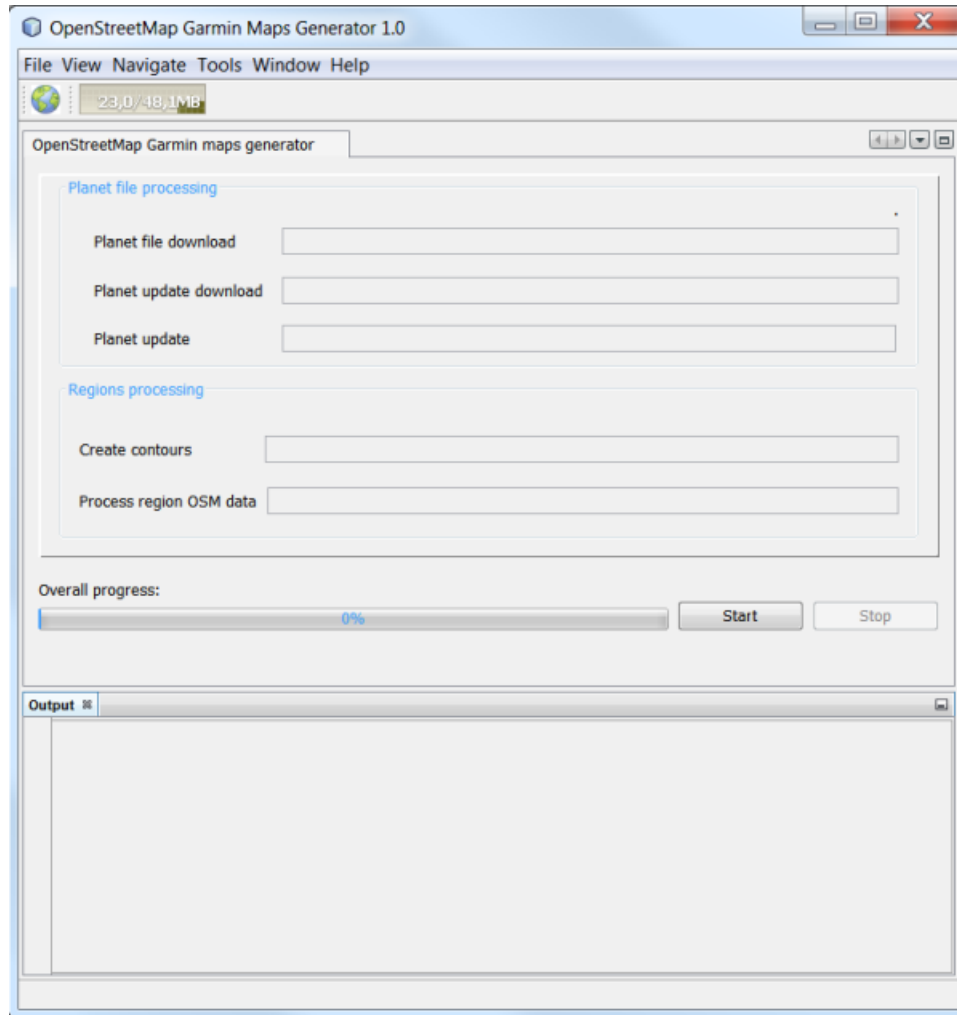
Follow these instructions to create maps of one or more predefined regions:

-  Click  or select Tools-Options to adjust program settings. Click appropriate tab for desired settings group.
Default settings will produce a set of Garmin maps covering the whole globe. You can adjust all settings according to your needs.
For first time use, set directory locations in the "Processing Parameters" tab and select regions to process.
- Click "Start" to begin data download and map generation.
Program status is displayed in the Output window.
- Wait until maps download and creation process is finished. It can take long time (12+ hours), especially on the first run.
- Copy maps to the GARMIN folder of the memory card of your Garmin instrument and/or install maps into MapSource/BaseCamp/QLandkarte.
- Repeat on a regular basis to add OSM updates to your maps.

Chapter 2. Reference

This section explains the program's controls/settings, providing User control. It is organized by program windows/tabs.

2.1. Main window controls



The main window is where you start/stop/exit the program, view map generation progress and access settings. We will briefly review the controls found here - note that hovering the mouse over an item provides a brief description.

There are three main window sections; menus/toolbars, processing/progress and output.

2.1.1. Toolbar

Options

Allows changing of program settings – Downloads, Processing Parameters and Regions.

This is the most frequently used window.

Open/Close Argument file editors

Opens tabs in the “Progress Area” to edit arguments passed to the program and external tools.

For advanced users only.

Save all, Undo, Redo

Controls text editing of the argument files.

Memory

Displays the current/committed Java heap memory usage. Clicking will force a Java garbage collection action.

Icons can be placed/removed from the toolbar by selecting View - Toolbar and clicking on the item.

Toolbar actions can be also accessed via main menu.

2.1.2. Progress bars


Report progress of the various steps to generate maps. Reports “Completed” as each step successfully finishes.

The “start” and “stop” buttons begin and stop map generation. These buttons switch to “exit” and “restart” upon program completion. See the Error Messages section for additional information.

2.1.3. Output window

Displays internal program activity messages and is helpful for tracking errors. Output is copied to the report.log file in the working directory. Log file is cleaned upon program restart.

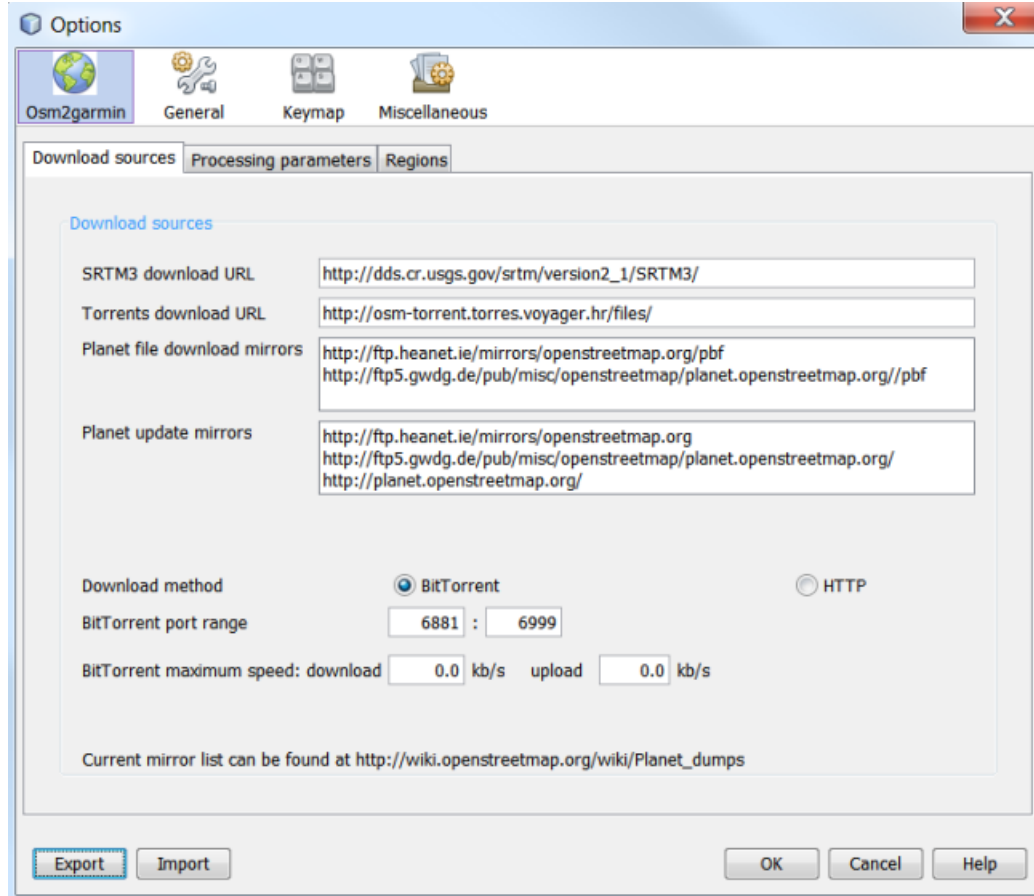
2.2. Program settings

Click  or select Tools-Options to open Program Settings dialog.

Changes are saved by selecting the “OK” button (lower right corner). They are retained and used for subsequent map generation session(s) and are not region specific

Export and Import buttons are not used by Osm2garmin, they provide internal Netbeans functionality and can be safely ignored by most users.

2.2.1. Download sources



SRTM3 download URL

URL for downloading SRTM data. If local/company mirror of SRTM3 data is available, this location can be changed. Please note that HTTP protocol only is supported.

Default value: http://dds.cr.usgs.gov/srtm/version2_1/SRTM3/

Torrents download URL

URL for downloading OSM planet file torrents. There is no need to change the default value under normal circumstances. This option affects BitTorrent download only.

Default value: <http://osm-torrent.torres.voyager.hr/files/>

Planet download mirrors

List of mirrors for HTTP downloads of the planet.pbf file one per line. Download mirror is randomly selected upon program startup. This option affects HTTP download only.

Default value:

<http://ftp.heanet.ie/mirrors/openstreetmap.org/pbf>
<http://ftp5.gwdg.de/pub/misc/openstreetmap/planet.openstreetmap.org/pbf>

Planet update mirrors

List of mirrors for downloading OSM updates one item per line. Update mirror is randomly selected each run.

Default value:

<http://ftp.heanet.ie/mirrors/openstreetmap.org>
<http://ftp5.gwdg.de/pub/misc/openstreetmap/planet.openstreetmap.org>

<http://planet.openstreetmap.org>

Download method

Method for initial planet file download. Default method is BitTorrent.



Warning

HTTP download method is deprecated and will be removed in future releases.

BitTorrent port range

Lists the range of ports for BitTorrent downloads. The first available port is used.

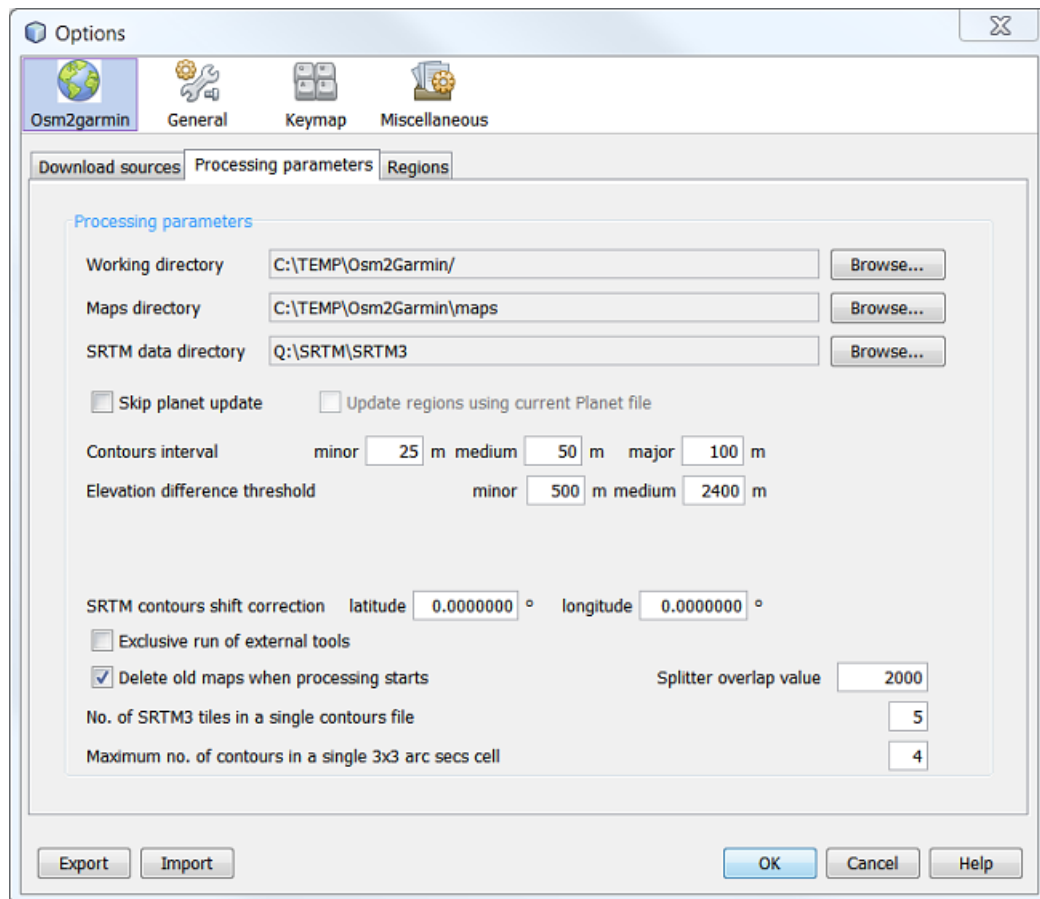
For best download performance, ports open to the Internet should be listed.

BitTorrent maximum speed

Speed limit for BitTorrent download/upload in kb/s. Value of 0 (zero) sets unlimited speed (default).

Program restart is required for changes to take effect.

2.2.2. Processing parameters



Working directory

Directory for saving all program, OSM planet and contour data.



Note

The Osm2garmin program needs at least 150-200 Gbyte of free space to save map data for the whole Earth.

Maps directory

Directory where final maps will be saved. Each region is in a separate subdirectory.

SRTM data directory

Directory where downloaded SRTM3 data is saved. If you have a local SRTM mirror available, you can point to that directory. Data available in this directory will not be downloaded but missing (incomplete) data will be.

Skip planet updates

Skip downloading planet file updates and updating. Regions directories are not cleared when this option is checked. Regions maps are not refreshed. If regions boundaries were changed since last update, processing results will be incorrect or processing of the affected regions will fail.

Elevation difference threshold

Contours are processed in one of three groups. To create the groups, two “elevation difference thresholds” are set to establish “break points” between the groups.

The minor group contains tiles where the elevation difference is less than the first threshold, the major group where the difference is greater than the second threshold and the intermediate group is between the two values.

Default settings are 500 and 2400.

Contours interval

Sets the elevation distance between contours that are calculated within each group.

Default values are minor 25, intermediate 50 and major 100.

Maximum number of contours in a single 3x3 arc sec cell

Determines the density of contours in a tile 3x3 arcSecs tile. If more contours appear in a single tile than this value, no contours are plotted inside the tile.

Default setting is 4.

No. of SRTM3 tiles in a single contours file

Degree of aggregation of SRTM tiles in each contour file. A higher number makes the contours processing faster but needs more memory and increases overlap at region boundaries.

Default setting is 5, i.e. each single contours file aggregates $5 \times 5 = 25$ SRTM tiles.

SRTM contours shift correction

In some areas, SRTM data have a systematic processing shift. This results in contours being shifted relative to OSM data. If your map has this problem, a correction can be introduced here.

E.g. for some regions in Central Europe, value of 0.0004167 (= 1/2400) degree in both directions synchronizes SRTM and OSM data.

Default setting is 0 in both directions.

Exclusive run of external tools

When selected, no simultaneous run of more than one external tool (Osmosis, Mkgmap or Splitter) is allowed. Useful if you experience out-of-memory problems but extends processing time.

See the Assign more memory to the program section for more info.

Skip planet update

When selected, updates to the OSM Planet file are not downloaded and the Planet file is not updated. Recent additions to OSM (buildings, POI, roads) that were posted after your last update will not be added to your map.

This option can save considerable processing time.

Update regions using current planet file

When selected, the Planet file is updated using the update file that was previously downloaded. Only active when Skip planet update has been selected.

Delete old maps when processing starts

When selected, the files in the regions selected for processing are deleted upon program execution. Downloaded OSM data and previously computed contours are not deleted.

Splitter overlap value

Increase this value if you experience routing problems over tiles boundaries.

A value of 10,000 has been reported to correct routing problems.

Default setting is 2,000.



Note

Default contour settings were chosen to generate maps for the continental sized, predefined default regions and display them correctly on most common Garmin GPS's.

Settings are usually changed only when maps for user defined regions are created and more/less detail is required.

Caution should be exercised as changing settings can result in increased map size, required memory, processing time and/or degraded view-ability.



Caution

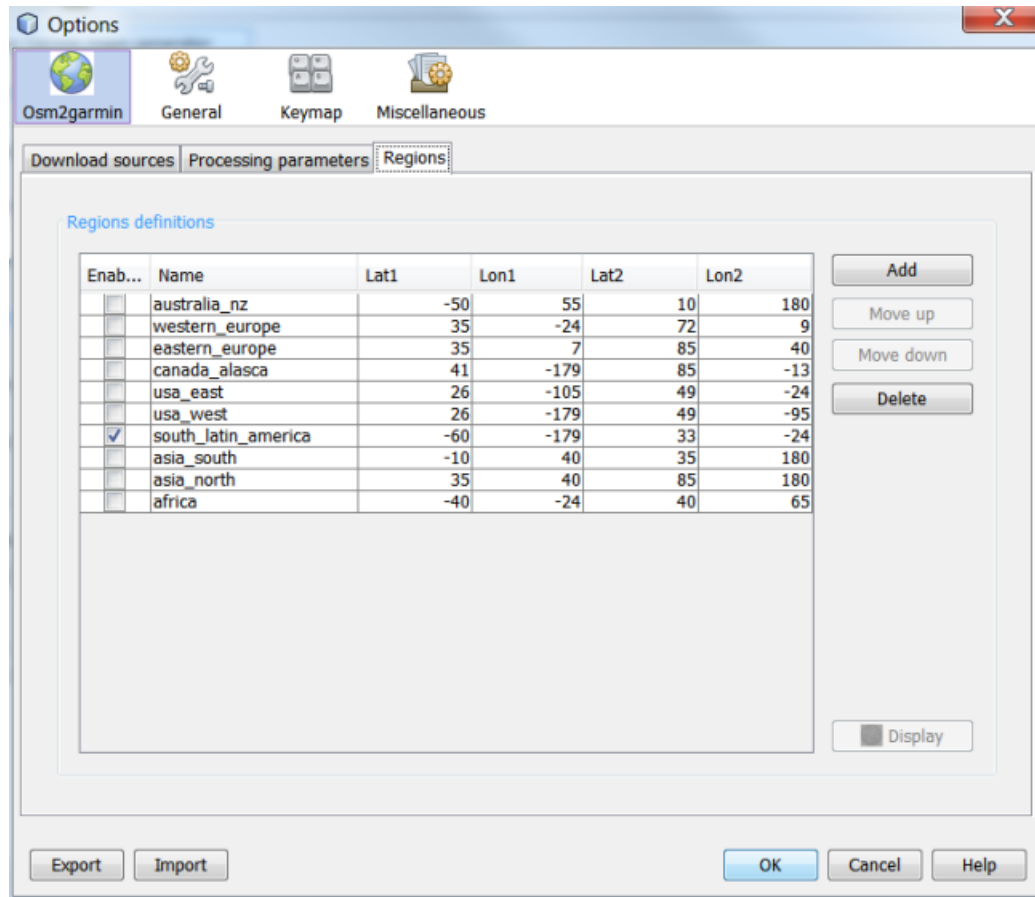
If any parameter affecting contours generation is changed, the contours directory in the working directory must be cleaned (emptied) to reprocess contour data.



Note

Contour generation is a complex process. Users should read the “Contour generating” explanation in the appendix for more information before changing default parameters.

2.2.3. Regions



The Regions table defines individual regions for map generation.

Each rectangular region is defined by a name and bounding coordinates. The Display button opens a map of the region in a browser window and saves a HTML page in the working directory.

Selecting the "Enabled" box generates maps for the region. Regions are processed from top to bottom and the sequence is changed by highlighting a region and using the Move up and Move down buttons.

New regions are created by selecting the "Add" button. Values are entered/changed by double-clicking or using the F2 key for each cell of the table. To define region boundaries, visualize a box with North at the top. Lat1 is the bottom of the box, Lat2 the top, Long1 the left side and Long2 the right side. So $Lat1 < Lat2$ and $Long1 < Long2$. Both positive and negative values are used for Lat/Long.

Delete button deletes the highlighted region.

When a file named `<region_name>.poly` exists in the working directory, a region is defined by polygon coordinates from the .poly file. Coordinates in the Regions table represent the bounding box of the polygon and are not editable.

More information about polygon file formats, download sources and examples are at: http://wiki.openstreetmap.org/wiki/Osmosis/Polygon_Filter_File_Format

2.2.4. Other sections of the Options dialog

General

Web Browser and Proxy settings.

Keymap

Defines program's keyboard shortcuts.

Miscellaneous

Controls file settings and windows behaviors.

Chapter 3. Using your map files

When map generation finishes, the following files are created in each region's directory:

gmapsupp.img - Garmin GPS mapset file

The compiled mapset for Garmin GPSs. Copy this file into the Garmin folder on the external memory card of the GPS. Most Garmin GPS's support only one mapset at a time.

3/4/5/6xxxxxxx.img - contours maps in Garmin format, **7xxxxxxx.img** - OSM data converted to Garmin format

The numbered individual map files (XXX tiles) which were compiled together to create the **gmapsupp.img** mapset file in the final processing step. These files can be registered to, and used in, MapSource/BaseCamp by using methods described later.

installer.bat

This Windows script creates the necessary registry items for MapSource/BaseCamp to recognize your generated maps.

uninstaller.bat

This Windows script uninstalls maps from MapSource/BaseCamp. You must uninstall and reinstall maps if you generate updated maps or change the number/order of regions in the Regions table.

osmmap*.*

Files used by MapSource/BaseCamp.

osmmap.nsi

Script for the Nullsoft Scriptable Install System (NSIS) which uses MakeNSIS or MakeNSISW to create a Windows installer and files for MapSource/BaseCamp used on a remote computer. At the destination computer when `<region_name>.exe` is run, maps are unpacked to `c:\garmin\maps\<region_name>`. Maps can be uninstalled and deleted using standard "Windows" methods, e.g. "Add/remove programs" or "Programs and functions" control panel items.

You can obtain NSIS from <http://nsis.sourceforge.net>.



Caution

Note that if map size exceeds 2Gb, installer creation can fail because of default /SOLID compressor parameter in `osmmap.nsi` script. To avoid this problem, either remove "/SOLID" parameter from SetCompressor command in the script, or use /X"SetCompressor /FINAL LZMA" startup parameter for MakeNSIS.



Note

MakeNSIS command can be e.g.:

```
"C:\Program Files\NSIS\makensis.exe" /X"SetCompressor /FINAL lzma" osmmap.nsi
```

Even without "/SOLID" parameter, total size of resulting installer file cannot exceed 2 Gb, which corresponds to `gmapsupp.img` size approx. 3 Gb. This is an unbreakable limitation of current version of NSIS.

Maps installed via NSIS installer are not compatible with `installer.bat` / `uninstaller.bat` method. `uninstaller.bat` will NOT uninstall maps installed via NSIS and vice-versa.



Warning

Do NOT delete/overwrite commercial maps on the GPS's internal memory or external card - use a new card instead. Maps generated by this software come with NO WARRANTY of any kind and you use them at your own risk.



Important

Depending on the model and firmware version of the Garmin GPS, the maximum size of the gmapsupp.img file is 4 or 2 Gb. If your file is larger than this, the map will not be displayed.



Note

To decrease the size of the generated mapset, the region's boundaries can be reduced or contour creation parameters adjusted.

If contour settings are changed, the contents of the contours directory in the working directory must be deleted.

Generation of new contours can take a long time.

Chapter 4. Startup options

The program launcher (osm2garmin for Linux or osm2garmin.exe for Windows) supports several startup options which control parameters of Java NetBeans. Startup options can be listed by passing -h or --help as a startup option, e.g.:

```
osm2garmin.exe --help
```

4.1. Assign more memory to the program

Java JRE works with a fixed-maximum-size heap memory space and will not use more memory than it is allocated at startup. Thus, during processing it will not use more memory, even if it is available on your system. Items influencing memory usage include running multiple external tools, contour settings and region size.

If running a 64bit system with 64bit JRE, the Java maximum memory size can be increased by:

1. Starting program with -J-Xmx<memsize>m option where memsize is memory size in Mbytes, e.g.

```
osm2garmin.exe -J-Xmx2000m
```

2. Edit the configuration file osm2garmin.conf located at

Windows `<PROGRAM_FILES>/osm2garmin_<version>/etc/osm2garmin.conf`

Linux `/usr/local/osm2garmin_<version>/etc/osm2garmin.conf`

In the file replace

```
-J-Xmx1400m
```

with higher value, e.g.

```
-J-Xmx2000m
```

In Windows Vista or 7 use a privileged editor by right-clicking Notepad, Start, menu shortcut and select "Run as administrator".



Note

32 bit Java VM on both 32 bit and 64 bit Windows OS can not allocate more heap memory than approx. 1400m.

The starting heap memory size can be changed at

```
-J-Xms=<memsize>m
```

Note that Xms <= Xmx.

On 64 bit Windows systems with 64 bit JVM, additional parameter

```
-J-XX:MaxPermSize=<memsize>m
```

is often needed to avoid PermGenSpace overflow errors.

To change the JRE to a different version, change the parameter

```
--jdkhome <path-to-jre>
```

This can be useful e.g. if both 32 bit and 64 bit JVM is installed on a single computer.

Startup parameters can be added permanently to the program startup link, e.g. associated to the program desktop icon. In Windows, right-click the icon, select Properties and adjust the settings as needed

Your Windows customized command line can look like:

```
c:\program files\osm2garmin_>version<\bin\osm2garmin.exe" -J-Xmx2000m --jdkhome "c:/program files/  
Java/jre6"
```

Chapter 5. Command-line processing

The Osm2garmin program offers a command-line, unattended mode where map generation is performed in a single step with no user intervention.

The command-line module is invoked from a single *jar* file available in the directory where the program is installed:

```
osm2garmin/modules/org-mantlik-osm2garmin.jar
```

Copy the file to your working directory and run the command

```
java -Xmx<maxsize>m -jar org-mantlik-osm2garmin.jar
```

On the first run, two files are created, *regions.txt* and *settings.properties*.

Edit both files to meet your needs and run the program again. The complete downloading and processing cycle occurs.

Repeating the unattended run will download OSM updates and create updated maps.

Chapter 6. Installation, Un-installation, Updating, Upgrading

6.1. System requirements

- Windows XP/Vista/7/8 or Linux 2.6+ or Max OSX 10
- Minimum 2 Gb of RAM and 200 Gb of free disk space
- Sun Java JRE 6 or newer 64 or 32 bit

Java must be downloaded and installed separately from <http://java.com/download>.



Note

With 32 bit Java VM, some functions of the Osm2garmin software are not available.

Osm2garmin is a processor intensive program and while it requires sufficient memory to generate maps, performance is increased with fast, 64 bit multi-core processors. At least 4Gb of ram, 500Gb of disc space and 64 bit multi-core processor(s) is a recommended configuration.

6.2. Installation

Download the installer (stable or unstable version) for your os from: <http://code.google.com/p/osm2garmin/downloads>

Check that Java JRE 6 or newer is installed.

Change to the directory where you downloaded the Osm2garmin installer and:

Windows and MacOSX Double click on the installer file.

Linux Allow executing file as program.

In a terminal window type:

```
sudo ./<program name>.sh <enter>
```

Complete installation using the provided Installer Wizard which installs Osm2garmin to a user determined folder.

6.3. Un-installation

Windows Uninstall the program from Control Panels - Add and remove programs / Programs and functions.

Linux and MacOSX Change to

```
/usr/local<program name>
```

In a terminal window type:

```
sudo ./uninstall.sh <enter>
```

Complete using the Uninstall Wizard.

6.4. Upgrading

The software regularly checks for new releases. When new version was published, update wizard is offered automatically.

If you want to check for new version manually, you can select Help - Check for updates.

Complete upgrade using the Upgrade Wizard. Osm2garmin must be restarted after upgrade is finished.



Note

It is not recommended to run Upgrade Wizard when maps generation is in progress.

6.5. Unstable (development) version

Unstable version of the software implements the newest features not yet included in the stable version.

More information concerning unstable version including detail instructions how to switch your installation of the Osm2garmin software into unstable version can be found here:

<https://code.google.com/p/osm2garmin/wiki/UnstableVersionHowto> [<http://code.google.com/p/osm2garmin/wiki/UnstableVersionHowto>]

Appendix A. Frequently asked questions

Is the program still running?

Osm2garmin takes a long time to generate maps, particularly the first time it runs because many Gigabytes of Planet and SRTM data must be downloaded and processed.

In the main program window, check the processing boxes for status information and the “Output – Osm2garmin” window for activity messages. If the status is not changing for a long time (e.g. if “processing maps completed xx%” is not increasing) or there are no activity messages, then the program has probably stalled.

You can view the Resources tab of the System Monitor program of your system, your processor(s), disk(s) and/or network should be highly active.

If the program has stalled, Select “Stop”, “exit” then “ok”. Run again and consider increasing Java maximum memory heap size and/or changing program parameters.

Updating is taking a long time.

Yes, it does. All 2 billion nodes and 200 million ways in the planet file must be checked and updated. Selecting the “Skip planet update” box prevents the downloading and updating of the planet file if you would like to process new/updated regions with existing OSM data.

Create Contours box reports "Null".

This indicates that that the contour creation process failed. Try re-running the program.

Out of memory?

The error message will depend on which situation caused the problem. Examine output window and log files.

More information: Assign more memory to the program

Output tab reports “Attention: Data being output lacks metadata. Please use omitmetadata=true”

This is a bug in the Osmosis external tool which falsely reports this error message, as Osm2garmin does not use OSM metadata. The message can be safely ignored.

How can I view my maps?

In Windows, Maps created by Osm2garmin can be viewed in MapSource/Basemap by using the installer.bat in each region's subdirectory.

QlandkarteGT (Linux, Mac, Win) can also display Osm2garmin maps by selecting File, Load Map, the osmmmap.tdb and then osmmmap_mdr.img file for the region of interest. You may have to zoom in a number of times to see details of your map.

Contours but not OSM data is displayed.

If this is the first time you are processing a new region and the “Skip Planet Update” option is checked, then Osm2garmin did not create the 7xxxxxx.img OSM data files. Check the region's subdirectory to verify that these files were not created. Un-select the “Skip planet update” and re-run the program.

OSM data but no contours are displayed on the GPS

In version 1.1 of the software there is a bug that prevents contours from being displayed for regions with negative Lat/Long values under some circumstances. Please upgrade to newer version.

Why is OSM Planet downloading again?

If your planet file is older than 12 of September 2012, it was released under old CC-BY-SA License while newer versions are released under ODbL License. License terms do not allow update of CC-BY-SA licensed data with ODbL data. Osm2garmin software has to download latest available ODbL Planet file and use it for any further updates.

This is a one-time event only, it should never happen again. OpenStreetMap Foundation is sorry for inconvenience.

Where can I get more information on the external tools?

Mkgmap - <http://www.mkgmap.org.uk/>

Splitter - <http://www.mkgmap.org.uk/doc/splitter.html>

Osmosis - <http://wiki.openstreetmap.org/wiki/Osmosis>

Appendix B. Contours generation

Contour generation is a complex process and the following explanation provides a “high level” overview. Nevertheless it should provide the user with enough information to adjust contour settings.

We begin with a description of Osm2garmin's data structure, terminology and the steps to generate contours.

The data structure used for contour generation is based on:

SRTM raster cells (appx. 90x90 meters) which contain position and elevation data.

Cells are combined into 1x1 degree tiles (appx. 111x111 kilometers – see below), each tile contains approximately 1.5 million cells.

Tiles are combined into contour files.

Terminology:

| | |
|--------------------------------|---|
| Elevation difference | difference between the lowest and highest elevation points in a tile |
| Elevation difference threshold | the “break point” that determines which “group” a tile is assigned to |
| Contour interval | distance (elevation) between contours |
| Contour density | number of contours in a single tile |
| Tiles in a file | number of tiles combined into a contour file |

The steps to generate contours begin with examining each tile, calculating the tile's elevation difference and assigning it to one of three processing groups (minor, intermediate or major). Contours are then generated for each file based on the contour interval value for the group. The contour density of each tile is checked and adjoining tiles are combined into files. These contour files are compressed for future use and converted into Garmin .img files.

Processing using external tools occurs at each step. Complicating this process is that users can adjust program settings at each stage of processing and the settings interact with each other, sometimes in unexpected ways.

Garmin GPS devices display two “types” of contours, regular and major (indicated by a thicker contour line) but these contours do not relate to the 3 groups discussed above. Rather, a contour is selected for each tile and a major is selected a group higher.

E.g. if for a particular tile, minor contour group will be created, each contour falling into intermediate group will be marked "major" for Garmin. Similarly, if intermediate contours will be created, each contour corresponding to major contour interval will be marked as "major" etc.

To generate contours for continental sized regions, with their varying elevation profiles and to keep map file size reasonable, Osm2garmin organizes tiles into three processing “groups” (minor, intermediate and major). Using 3 groups (each with an associated contour interval) allows contours to be displayed in flat, intermediate and mountainous regions in reasonable spacing. The alternative, a “one size fits all” contour processing, can result in widely spaced and/or highly bunched contours, making GPS viewing and navigation difficult.

Example:

The state of Colorado in the USA has a low, flat plain in the east, a high mountainous center and a mid level plateau in the west. Setting threshold values of 1500 minor and 5000 medium will generate minor contours for each 1x1 degree SRTM tile where elevation difference between the highest and the lowest point will be less than 1500 m, i.e. on the eastern plains where relief is low. In the rest of the area, intermediate contours will be created, because the elevation difference never exceeds 5000 m in a single SRTM tile.

The longitudinal width of SRTM tiles varies with latitude approximately as follows:

111 km at 0 degrees
96 km at 30 degrees
79 km at 45 degrees

56 km at 60 degrees

Appendix C. License

C.1. GNU General Public License

Version 2, June 1991

Copyright (C) 1989, 1991 Free Software Foundation, Inc.,
51 Franklin Street, Fifth Floor, Boston, MA 02110-1301 USA
Everyone is permitted to copy and distribute verbatim copies
of this license document, but changing it is not allowed.

Preamble

The licenses for most software are designed to take away your freedom to share and change it. By contrast, the GNU General Public License is intended to guarantee your freedom to share and change free software--to make sure the software is free for all its users. This General Public License applies to most of the Free Software Foundation's software and to any other program whose authors commit to using it. (Some other Free Software Foundation software is covered by the GNU Lesser General Public License instead.) You can apply it to your programs, too.

When we speak of free software, we are referring to freedom, not price. Our General Public Licenses are designed to make sure that you have the freedom to distribute copies of free software (and charge for this service if you wish), that you receive source code or can get it if you want it, that you can change the software or use pieces of it in new free programs; and that you know you can do these things.

To protect your rights, we need to make restrictions that forbid anyone to deny you these rights or to ask you to surrender the rights. These restrictions translate to certain responsibilities for you if you distribute copies of the software, or if you modify it.

For example, if you distribute copies of such a program, whether gratis or for a fee, you must give the recipients all the rights that you have. You must make sure that they, too, receive or can get the source code. And you must show them these terms so they know their rights.

We protect your rights with two steps: (1) copyright the software, and (2) offer you this license which gives you legal permission to copy, distribute and/or modify the software.

Also, for each author's protection and ours, we want to make certain that everyone understands that there is no warranty for this free software. If the software is modified by someone else and passed on, we want its recipients to know that what they have is not the original, so that any problems introduced by others will not reflect on the original authors' reputations.

Finally, any free program is threatened constantly by software patents. We wish to avoid the danger that redistributors of a free program will individually obtain patent licenses, in effect making the program proprietary. To prevent this, we have made it clear that any patent must be licensed for everyone's free use or not licensed at all.

The precise terms and conditions for copying, distribution and modification follow.

GNU GENERAL PUBLIC LICENSE
TERMS AND CONDITIONS FOR COPYING, DISTRIBUTION AND MODIFICATION

0. This License applies to any program or other work which contains a notice placed by the copyright holder saying it may be distributed under the terms of this General Public License. The "Program", below, refers to any such program or work, and a "work based on the Program" means either the Program or any derivative work under copyright law: that is to say, a work containing the Program or a portion of it, either verbatim or with modifications and/or translated into another language. (Hereinafter, translation is included without limitation in the term "modification".) Each licensee is addressed as "you".

Activities other than copying, distribution and modification are not covered by this License; they are outside its scope. The act of running the Program is not restricted, and the output from the Program is covered only if its contents constitute a work based on the Program (independent of having been made by running the Program). Whether that is true depends on what the Program does.

1. You may copy and distribute verbatim copies of the Program's source code as you receive it, in any medium, provided that you conspicuously and appropriately publish on each copy an appropriate copyright notice and disclaimer of warranty; keep intact all the notices that refer to this License and to the absence of any warranty; and give any other recipients of the Program a copy of this License along with the Program.

You may charge a fee for the physical act of transferring a copy, and you may at your option offer warranty protection in exchange for a fee.

2. You may modify your copy or copies of the Program or any portion of it, thus forming a work based on the Program, and copy and distribute such modifications or work under the terms of Section 1 above, provided that you also meet all of these conditions:

- a) You must cause the modified files to carry prominent notices stating that you changed the files and the date of any change.
- b) You must cause any work that you distribute or publish, that in whole or in part contains or is derived from the Program or any part thereof, to be licensed as a whole at no charge to all third parties under the terms of this License.
- c) If the modified program normally reads commands interactively when run, you must cause it, when started running for such interactive use in the most ordinary way, to print or display an announcement including an appropriate copyright notice and a notice that there is no warranty (or else, saying that you provide a warranty) and that users may redistribute the program under these conditions, and telling the user how to view a copy of this License. (Exception: if the Program itself is interactive but does not normally print such an announcement, your work based on the Program is not required to print an announcement.)

These requirements apply to the modified work as a whole. If

identifiable sections of that work are not derived from the Program, and can be reasonably considered independent and separate works in themselves, then this License, and its terms, do not apply to those sections when you distribute them as separate works. But when you distribute the same sections as part of a whole which is a work based on the Program, the distribution of the whole must be on the terms of this License, whose permissions for other licensees extend to the entire whole, and thus to each and every part regardless of who wrote it.

Thus, it is not the intent of this section to claim rights or contest your rights to work written entirely by you; rather, the intent is to exercise the right to control the distribution of derivative or collective works based on the Program.

In addition, mere aggregation of another work not based on the Program with the Program (or with a work based on the Program) on a volume of a storage or distribution medium does not bring the other work under the scope of this License.

3. You may copy and distribute the Program (or a work based on it, under Section 2) in object code or executable form under the terms of Sections 1 and 2 above provided that you also do one of the following:

- a) Accompany it with the complete corresponding machine-readable source code, which must be distributed under the terms of Sections 1 and 2 above on a medium customarily used for software interchange; or,
- b) Accompany it with a written offer, valid for at least three years, to give any third party, for a charge no more than your cost of physically performing source distribution, a complete machine-readable copy of the corresponding source code, to be distributed under the terms of Sections 1 and 2 above on a medium customarily used for software interchange; or,
- c) Accompany it with the information you received as to the offer to distribute corresponding source code. (This alternative is allowed only for noncommercial distribution and only if you received the program in object code or executable form with such an offer, in accord with Subsection b above.)

The source code for a work means the preferred form of the work for making modifications to it. For an executable work, complete source code means all the source code for all modules it contains, plus any associated interface definition files, plus the scripts used to control compilation and installation of the executable. However, as a special exception, the source code distributed need not include anything that is normally distributed (in either source or binary form) with the major components (compiler, kernel, and so on) of the operating system on which the executable runs, unless that component itself accompanies the executable.

If distribution of executable or object code is made by offering access to copy from a designated place, then offering equivalent access to copy the source code from the same place counts as distribution of the source code, even though third parties are not compelled to copy the source along with the object code.

4. You may not copy, modify, sublicense, or distribute the Program except as expressly provided under this License. Any attempt otherwise to copy, modify, sublicense or distribute the Program is

void, and will automatically terminate your rights under this License. However, parties who have received copies, or rights, from you under this License will not have their licenses terminated so long as such parties remain in full compliance.

5. You are not required to accept this License, since you have not signed it. However, nothing else grants you permission to modify or distribute the Program or its derivative works. These actions are prohibited by law if you do not accept this License. Therefore, by modifying or distributing the Program (or any work based on the Program), you indicate your acceptance of this License to do so, and all its terms and conditions for copying, distributing or modifying the Program or works based on it.

6. Each time you redistribute the Program (or any work based on the Program), the recipient automatically receives a license from the original licensor to copy, distribute or modify the Program subject to these terms and conditions. You may not impose any further restrictions on the recipients' exercise of the rights granted herein. You are not responsible for enforcing compliance by third parties to this License.

7. If, as a consequence of a court judgment or allegation of patent infringement or for any other reason (not limited to patent issues), conditions are imposed on you (whether by court order, agreement or otherwise) that contradict the conditions of this License, they do not excuse you from the conditions of this License. If you cannot distribute so as to satisfy simultaneously your obligations under this License and any other pertinent obligations, then as a consequence you may not distribute the Program at all. For example, if a patent license would not permit royalty-free redistribution of the Program by all those who receive copies directly or indirectly through you, then the only way you could satisfy both it and this License would be to refrain entirely from distribution of the Program.

If any portion of this section is held invalid or unenforceable under any particular circumstance, the balance of the section is intended to apply and the section as a whole is intended to apply in other circumstances.

It is not the purpose of this section to induce you to infringe any patents or other property right claims or to contest validity of any such claims; this section has the sole purpose of protecting the integrity of the free software distribution system, which is implemented by public license practices. Many people have made generous contributions to the wide range of software distributed through that system in reliance on consistent application of that system; it is up to the author/donor to decide if he or she is willing to distribute software through any other system and a licensee cannot impose that choice.

This section is intended to make thoroughly clear what is believed to be a consequence of the rest of this License.

8. If the distribution and/or use of the Program is restricted in certain countries either by patents or by copyrighted interfaces, the original copyright holder who places the Program under this License may add an explicit geographical distribution limitation excluding those countries, so that distribution is permitted only in or among countries not thus excluded. In such case, this License incorporates

the limitation as if written in the body of this License.

9. The Free Software Foundation may publish revised and/or new versions of the General Public License from time to time. Such new versions will be similar in spirit to the present version, but may differ in detail to address new problems or concerns.

Each version is given a distinguishing version number. If the Program specifies a version number of this License which applies to it and "any later version", you have the option of following the terms and conditions either of that version or of any later version published by the Free Software Foundation. If the Program does not specify a version number of this License, you may choose any version ever published by the Free Software Foundation.

10. If you wish to incorporate parts of the Program into other free programs whose distribution conditions are different, write to the author to ask for permission. For software which is copyrighted by the Free Software Foundation, write to the Free Software Foundation; we sometimes make exceptions for this. Our decision will be guided by the two goals of preserving the free status of all derivatives of our free software and of promoting the sharing and reuse of software generally.

NO WARRANTY

11. BECAUSE THE PROGRAM IS LICENSED FREE OF CHARGE, THERE IS NO WARRANTY FOR THE PROGRAM, TO THE EXTENT PERMITTED BY APPLICABLE LAW. EXCEPT WHEN OTHERWISE STATED IN WRITING THE COPYRIGHT HOLDERS AND/OR OTHER PARTIES PROVIDE THE PROGRAM "AS IS" WITHOUT WARRANTY OF ANY KIND, EITHER EXPRESSED OR IMPLIED, INCLUDING, BUT NOT LIMITED TO, THE IMPLIED WARRANTIES OF MERCHANTABILITY AND FITNESS FOR A PARTICULAR PURPOSE. THE ENTIRE RISK AS TO THE QUALITY AND PERFORMANCE OF THE PROGRAM IS WITH YOU. SHOULD THE PROGRAM PROVE DEFECTIVE, YOU ASSUME THE COST OF ALL NECESSARY SERVICING, REPAIR OR CORRECTION.

12. IN NO EVENT UNLESS REQUIRED BY APPLICABLE LAW OR AGREED TO IN WRITING WILL ANY COPYRIGHT HOLDER, OR ANY OTHER PARTY WHO MAY MODIFY AND/OR REDISTRIBUTE THE PROGRAM AS PERMITTED ABOVE, BE LIABLE TO YOU FOR DAMAGES, INCLUDING ANY GENERAL, SPECIAL, INCIDENTAL OR CONSEQUENTIAL DAMAGES ARISING OUT OF THE USE OR INABILITY TO USE THE PROGRAM (INCLUDING BUT NOT LIMITED TO LOSS OF DATA OR DATA BEING RENDERED INACCURATE OR LOSSES SUSTAINED BY YOU OR THIRD PARTIES OR A FAILURE OF THE PROGRAM TO OPERATE WITH ANY OTHER PROGRAMS), EVEN IF SUCH HOLDER OR OTHER PARTY HAS BEEN ADVISED OF THE POSSIBILITY OF SUCH DAMAGES.

END OF TERMS AND CONDITIONS

How to Apply These Terms to Your New Programs

If you develop a new program, and you want it to be of the greatest possible use to the public, the best way to achieve this is to make it free software which everyone can redistribute and change under these terms.

To do so, attach the following notices to the program. It is safest to attach them to the start of each source file to most effectively convey the exclusion of warranty; and each file should have at least the "copyright" line and a pointer to where the full notice is found.

(one line to give the program's name and a brief idea of what it does.)
Copyright (C) (year) (name of author)

This program is free software; you can redistribute it and/or modify it under the terms of the GNU General Public License as published by the Free Software Foundation; either version 2 of the License, or (at your option) any later version.

This program is distributed in the hope that it will be useful, but WITHOUT ANY WARRANTY; without even the implied warranty of MERCHANTABILITY or FITNESS FOR A PARTICULAR PURPOSE. See the GNU General Public License for more details.

You should have received a copy of the GNU General Public License along with this program; if not, write to the Free Software Foundation, Inc., 51 Franklin Street, Fifth Floor, Boston, MA 02110-1301 USA.

Also add information on how to contact you by electronic and paper mail.

If the program is interactive, make it output a short notice like this when it starts in an interactive mode:

```
Gnomovision version 69, Copyright (C) year name of author
Gnomovision comes with ABSOLUTELY NO WARRANTY; for details type `show w'.
This is free software, and you are welcome to redistribute it
under certain conditions; type `show c' for details.
```

The hypothetical commands ``show w'` and ``show c'` should show the appropriate parts of the General Public License. Of course, the commands you use may be called something other than ``show w'` and ``show c'`; they could even be mouse-clicks or menu items--whatever suits your program.

You should also get your employer (if you work as a programmer) or your school, if any, to sign a "copyright disclaimer" for the program, if necessary. Here is a sample; alter the names:

```
Yoyodyne, Inc., hereby disclaims all copyright interest in the program
`Gnomovision' (which makes passes at compilers) written by James Hacker.
```

```
(signature of Ty Coon), 1 April 1989
Ty Coon, President of Vice
```

This General Public License does not permit incorporating your program into proprietary programs. If your program is a subroutine library, you may consider it more useful to permit linking proprietary applications with the library. If this is what you want to do, use the GNU Lesser General Public License instead of this License.

C.2. Third party libraries

The software uses third-party libraries built in the software distribution licensed under public open-source licenses compatible with GPL.

Please follow links provided in the table below to obtain full text of covering licenses or source code of the corresponding libraries if needed.

| Product name | Main page | License(s) information |
|---------------------|---|---|
| Java Bittorrent Api | http://sourceforge.net/projects/bitext/ | GPL version 2 [http://www.gnu.org/licenses/gpl-2.0.html] |

| Product name | Main page | License(s) information |
|---------------------|---|---|
| Mkgmap | http://www.mkgmap.org.uk/ | GPL version 2 [http://www.gnu.org/licenses/gpl-2.0.html] |
| Netbeans | http://netbeans.org | dual CDDL v. 1.0 and GPL v. 2 license [http://netbeans.org/about/legal/index.html] |
| OSM Tile Splitter | http://www.mkgmap.org.uk/page/tile-splitter | GPL version 2 [http://www.gnu.org/licenses/gpl-2.0.html] |
| Osmosis | http://wiki.openstreetmap.org/wiki/Osmosis | [http://wiki.openstreetmap.org/wiki/Osmosis] |

Most icons were provided by Axialis Software SA [<http://www.axialis.com>]